

## MetSolar® V3

The **MetSolar V3** system has been engineered for **larger scale installations** where larger spans and larger modules are required. The system has **multiple foundation options** that can be mixed on the same table, this helps on larger sites where ground penetration is not possible on part of an individual table or row.

With onsite logistics and manual handling being some of the main concerns on larger projects we have introduced the open fill ballast box, allowing for an operated machine to fill the ballast box with aggregate, thus **saving on cost, logistics and manual handling of concrete blocks.**

The V3 system is available with module clamps positioned in the web of the purlin as well as on the lip, the slots in the purlin are pre-designed and spaced for 1134 - 1303mm wide modules.

When mounting the module clamps within the web of the purlin you are **increasing its strength dramatically.**

For module clamps we offer the Vespr Solar clips - these revolutionary clips are a game changer for large scale projects, allowing a **fast and simple screw-less installation of modules**, also **incorporating anti-vibration and grounding into one simple part.**

The V3 system has been third-party **structurally verified by the SCI** (Steel Construction Institute) meaning you are **guaranteed a system that will withstand the loads onsite.**

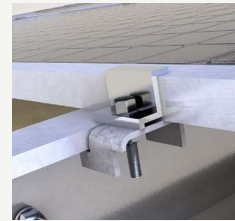
**Backed by DNV** the MetSolar product range is **bankable and insurable** allowing for peace of mind for investors and developers alike.



Construction  
Metal Forming

### MetSolar® V3

Application	Utility
System configuration	Twin post
Panel configuration	3 in portrait
Panel lengths (Min-Max)	1940mm - 2470mm
Panel clamping options	Aluminium top clamps <sup>1</sup> or Vespr clips <sup>2</sup>
Panel clamp locations	Purlin lip <sup>3</sup> or purlin slot <sup>4</sup> on request
System angles	17.5° (Custom angles are also available)
Bay size	3488mm (Longer spans available on request)
Max Table length	40m
Max Ground inclination	5°
Foundation options	Driven pile <sup>5</sup> , Cast-in pile <sup>6</sup> , Ballast plate <sup>7</sup> , Ballast box <sup>8</sup> , Concrete fixings <sup>9</sup>
Material specifications	S450 grade steel, ZM310 or ZM800 coatings direct from ArcelorMittal, Aluminium AL6005-T5
Corrosion resistance	Category C3 or C4 possible
Wind peak velocity	0.59Kn/m <sup>2</sup>
Snow loads	Zone 3 (Higher snow loads need prior calculation)
Warranty	25 years structure & design life (Longer available on request)
Design codes	BS EN 1991-1-3, BS EN 1991-1-4:2005+A1:2010, BS EN 1090 & BS EN 1991 Parts 1,3 & 7 (Eurocodes)
Additional features	Cable management holes in purlins for easy and efficient cable securing <sup>10</sup>  Multiple slots per connection for onsite adjustment  Universal components for easy assembly
Optional extras	Customizable inverter mounting stations, available with or without roof



1. Aluminium top clamps



2. Vespr clips



3. Purlin lip



4. Purlin Slot



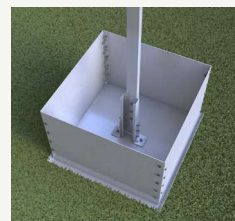
5. Driven pile



6. Cast-in pile



7. Ballast plate



8. Ballast box



9. Concrete fixings



10. Cable management holes in purlins for easy and efficient cable securing



For further information please contact **MetSolar**:

August 2025: v1.0

