



MetSolar® V1

The **MetSolar V1** system has been pre-engineered for smaller scale installations, with multiple foundation options it is easy to choose a foundation that can be achieved onsite with whatever plant you have available.

Structurally designed and verified to work on **75% of the UK's landmass**, the V1 system can be **quickly planned and delivered direct to site**.

Our detailed yet easy to read drawings and installation guides make the V1 system a **simple task to install**, with **minimal tools required** thanks to **universal components and fixings**.

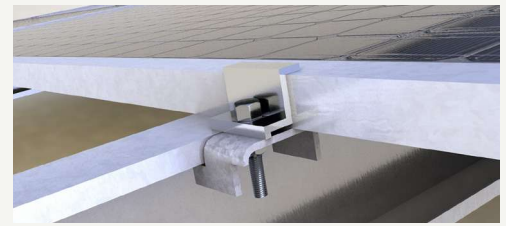
With over **10GWp worth of steel** being supplied into the construction industry since 2007, with **MetSolar** you get a system you can trust.



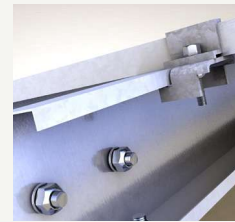
Construction
Metal Forming

MetSolar® V1

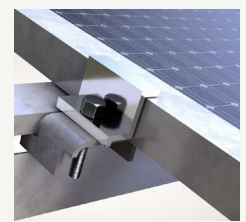
Application	Residential and small commercial
System configuration	Twin post
Panel configuration	2 in portrait
Panel lengths (Min-Max)	1640mm - 2384mm
Panel clamping options	Aluminium top clamps ¹
Panel clamp locations	Purlin lip ² or purlin slot ³ on request
System angles	17.5°, 22.5°, 27.5° (Custom angles available)
Bay size	2850mm
Max Table length	40m
Max Ground inclination	5°
Foundation options	Driven pile ⁴ , Cast-in pile ⁵ , Ballast plate ⁶ , Ballast box ⁷ , Concrete fixings ⁸
Material specifications	S450 grade steel, ZM310 or ZM800 coatings direct from ArcelorMittal, Aluminium AL6005-T5
Corrosion resistance	Category C3 or C4 possible
Wind peak velocity	0.59Kn/m ²
Snow loads	Zone 3 (Higher snow loads need prior calculation)
Warranty	25 years structure & design life (Longer available on request)
Design codes	BS EN 1991-1-3, BS EN 1991-1-4:2005+A1:2010. BS EN 1090 & BS EN 1991 Parts 1,3 & 7 (Eurocodes)
Additional features	Cable management holes ⁹ in purlins for easy and efficient cable securing Multiple slots per connection for onsite adjustment Universal components for easy assembly
Optional extras	Customizable inverter mounting stations, available with or without roof



1. Aluminium top clamps



2. Purlin lip



3. Purlin Slot



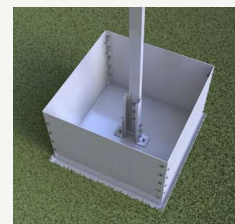
4. Driven pile



5. Cast-in pile



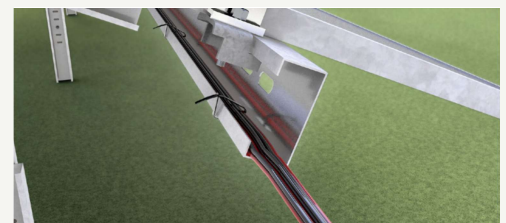
6. Ballast plate



7. Ballast box



8. Concrete fixings



9. Cable management holes in purlins for easy and efficient cable securing



For further information please contact **MetSolar**:

August 2025: v1.0

MetSolar®

Unit 3, Mamhilad Technology Park, Old Abergavenny Road,
Mamhilad, Monmouthshire, NP4 0JJ
Customer services: 01495 761 080
sales@mitsolar.uk.com
www.mitsolar.uk.com

